



Broomfield Avenue, Palmers Green, London, N13
Chain Free £649,995 Freehold

Anthony Webb
ESTATE AGENTS

Broomfield Avenue, Palmers Green, London, N13

A chain free 1920s built three bedroom terrace house with two receptions, modern kitchen, original loft room and beautiful front and rear gardens.

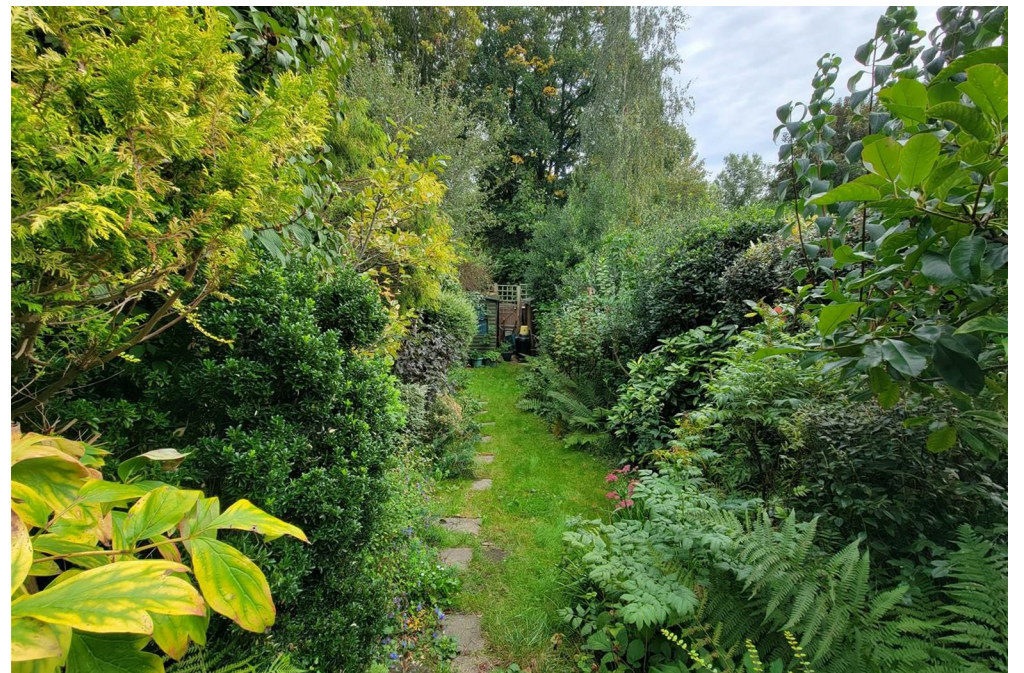
Broomfield Avenue is a popular residential turning in the heart of Palmers Green within easy walking distance of Aldermans Hills and Green Lanes shops, restaurants, Broomfield Park and mainline station into Moorgate. Arnos Grove and Bounds Green underground stations are also within easy reach.

Porch to entrance hallway with original front door • Living room with large bay window and working feature fireplace • Dining room with working feature fireplace and French doors to garden • Modern kitchen • First floor landing with original cupboard with stairs to original boarded loft room with window • Two good size double bedrooms • Single bedroom • Bathroom • Gas central heating with modern combination boiler • Front garden • Rear garden with timber workshop and rear access measuring approx. 75ft x 22ft.

Enfield Council Tax Band E

- Three bedrooms
- 1920s Built terrace house
- Two receptions
- Fitted kitchen
- First floor family bathroom
- Gas central heating
- Chain free
- Front and rear gardens



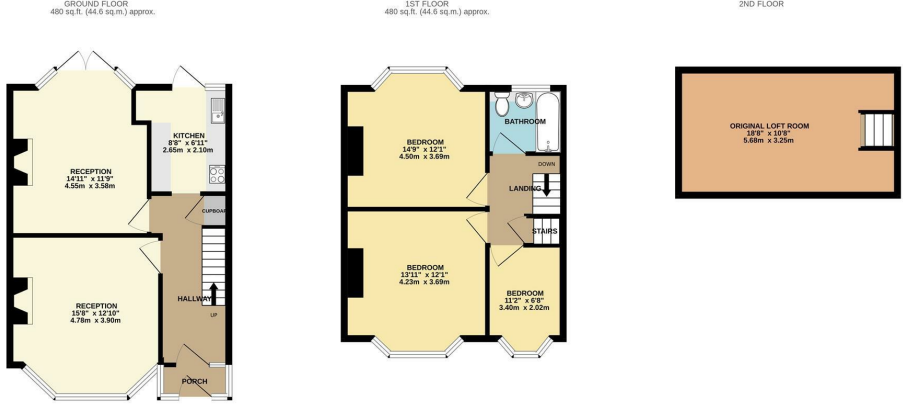


Broomfield Avenue Palmers Green London N13 4JR

Tenure: Freehold
Gross Internal Area: 960.00 sq ft



Energy Efficiency Rating		Current	Potential
Very energy efficient - lower running costs			
(92 plus) A			83
(81-91) B			
(69-80) C			
(55-68) D		61	
(39-54) E			
(17-38) F			
(1-20) G			
Not energy efficient - higher running costs			
England & Wales		EU Directive 2002/91/EC	
Environmental Impact (CO ₂) Rating		Current	Potential
Very environmentally friendly - lower CO ₂ emissions			
(92 plus) A			
(81-91) B			
(69-80) C			
(55-68) D			
(39-54) E			
(17-38) F			
(1-20) G			
Not environmentally friendly - higher CO ₂ emissions			
England & Wales		EU Directive 2002/91/EC	



TOTAL FLOOR AREA: 960 sq.ft. (89.2 sq.m.) approx.
Whilst every attempt has been made to ensure the accuracy of the floorplans contained here, measurements of doors, windows, rooms and any other items are approximate and no responsibility is taken for any error, omission or mis-statement. This plan is for illustrative purposes only and should be used as such by any prospective purchaser. The services, systems and appliances shown have not been tested and no guarantee as to their operability or efficiency can be given.
Made with Metropix K2023

Property particulars as supplied by Anthony Webb Estate Agents are set out as a general outline in accordance with the Property Misdescriptions Act (1991) only for the guidance of intending purchasers of lessees, and do not constitute any part of an offer or contract. Details are given without any responsibility, and any intending purchasers, lessees or third parties should not rely on them as inspection or otherwise as to the correctness of each of them. We have not carried out a structural survey and the services, appliances and specific fittings have not been tested. All photographs, measurements, floor plans and distances referred to are given as a guide only and should not be relied upon for the purchase of carpets or any other fixtures statements or representations of fact, but must satisfy themselves by or of fittings, gardens, roof terraces, balconies and communal gardens as well as tenure and lease details cannot have their accuracy guaranteed for intending purchasers. Lease details, service ground rent (where applicable) are given as a guide only and should be checked and confirmed by your solicitor prior to exchange of contracts. No person in the employment of Anthony Webb has any authority to make any representation or warranty whatever in relation to this property.

348 Green Lanes, Palmers Green, London N13 5TJ
020 8882 7888
palmersgreen@anthonywebb.co.uk
anthonywebb.co.uk

